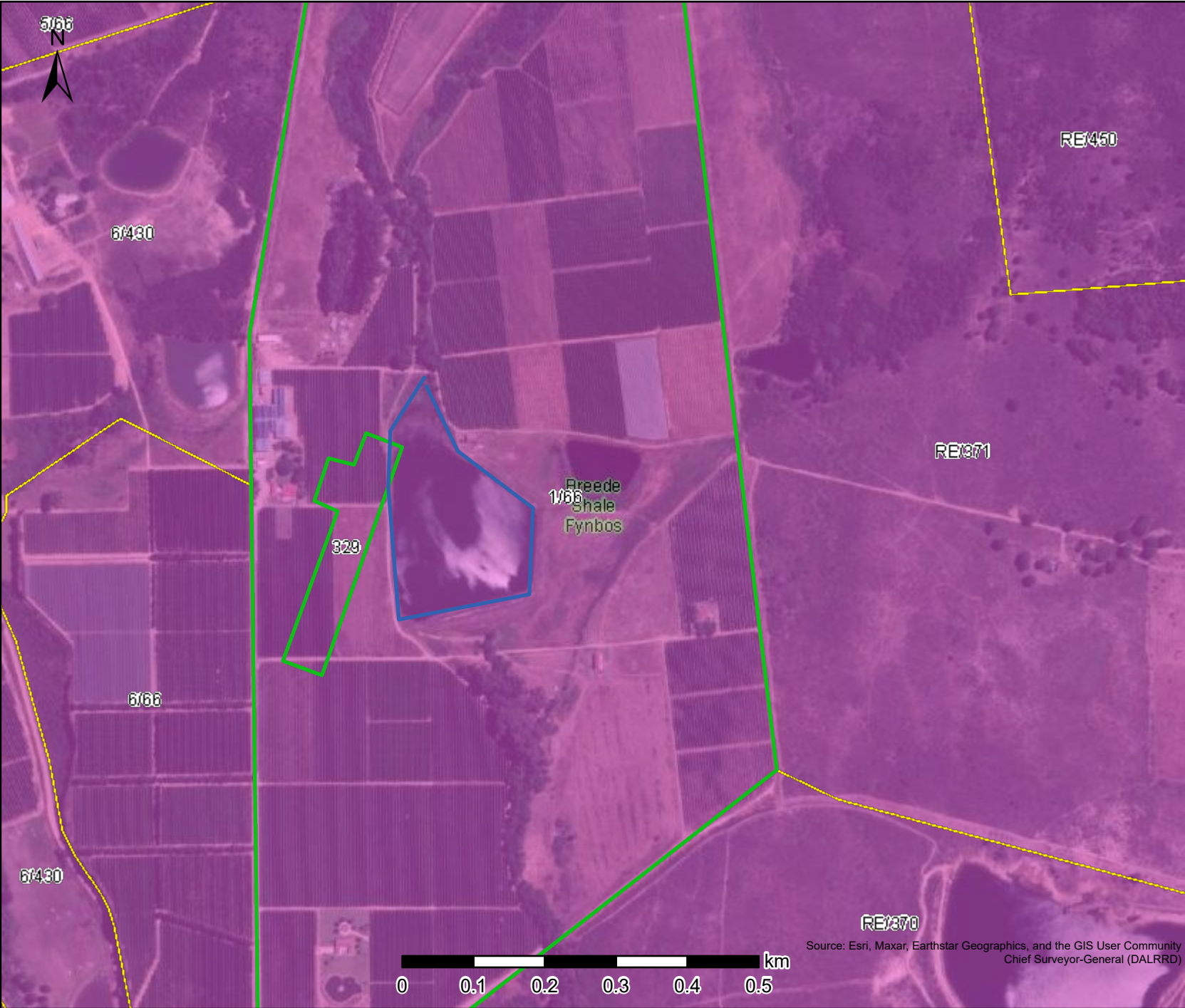




Mapped Vegetation



Legend

-  Farm Portions
- VEGMAP 2024 (beta)**
- Map Code
-  Breede Shale Fynbos (Endangered)

Map Center: Lon: 19°7'29.3"E
Lat: 33°12'33"S

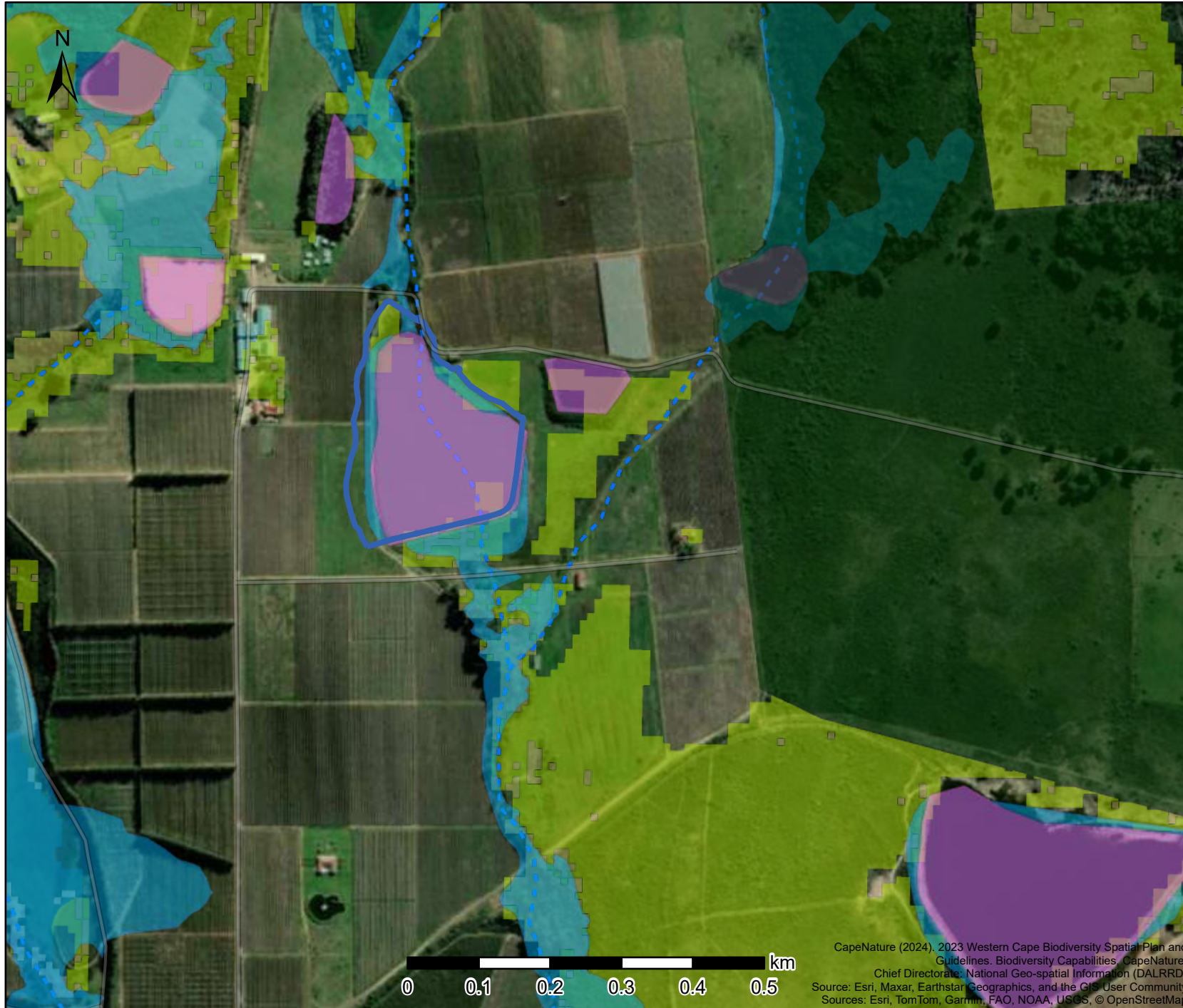
Scale: 1:9,028

Date created: 2025/05/09

Source: Esri, Maxar, Earthstar Geographics, and the GIS User Community
Chief Surveyor-General (DALRRD)



Expansion of Modderas Dam, Tulbagh



Legend

- Protected Areas
- Wetlands (NFEPA)**
 - Artificial
 - Natural
- Rivers**
 - Non-Perennial
- Critical Biodiversity Areas (Degraded)**
 - CBA2: Aquatic
 - CBA2: Terrestrial
- Critical Biodiversity Areas**
 - CBA: Terrestrial
 - CBA: Wetland

Map Center: Lon: 19°7'30.6"E
Lat: 33°12'36.8"S

Scale: 1:9,028

Date created: 2025/28/08

CapeNature (2024). 2023 Western Cape Biodiversity Spatial Plan and Guidelines. Biodiversity Capabilities. CapeNature. Chief Directorate: National Geo-spatial Information (DALRRD) Source: Esri, Maxar, Earthstar Geographics, and the GIS User Community Sources: Esri, TomTom, Garmin, FAO, NOAA, USGS, © OpenStreetMap

